

SPEC SHEET + MEASUREMENTS

SPORT-TEK

Sport-Tek® Women's Long Sleeve Rashguard Tee. LST470LS

Product photo



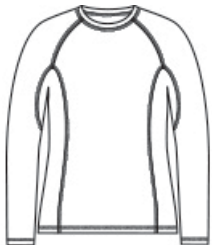
These tees stretch and move with you while you're swimming or during any water activity. Designed to combat UV rays and moisture, these breathable and quick-dry tees also have PosiCharge technology to lock-in colors and logos.

- 5.9-ounce, 90/10 poly/spandex stretch jersey with PosiCharge technology
- UPF rating of 50
- Trim, comfortable fit
- Tag-free label
- Raglan sleeves
- Underarm gussets

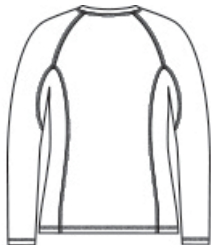
CARE INSTRUCTIONS

Machine wash cold with like colors. Do not use fabric softener. Only non-chlorine bleach, when needed. Tumble dry low. Remove promptly. Cool iron, if necessary. Do not dry clean.

Sketches



front



back

SPEC SHEET + MEASUREMENTS



Sport-Tek® Women's Long Sleeve Rashguard Tee.
LST470LS

PRODUCT MEASUREMENTS

	XS	S	M	L	XL	XXL	3XL	4XL
Body Length at Back	25	25 1/2	26	26 1/2	27	27 1/2	28	28 1/2
Bust	17	18	19	20 1/2	22	24	25 1/2	27 1/2
Sleeve Length from Center Back	31	31 1/2	32	32 5/8	33 1/4	34	34 1/4	34 5/8

Body Length at Back: Measured from high point shoulder to finished hem at back.

Bust: Measured across the chest one inch below armhole when laid flat.

Sleeve Length from Center Back: Measure from Center Back neck to shoulder point to sleeve hem.

SIZE CHARTS

	XS	S	M	L	XL	XXL	3XL	4XL
Size	2	4/6	8/10	12/14	16/18	20/22	24/26	28/30
Bust	32-34	35-36	37-38	39-41	42-44	45-47	48-51	52-55

SPEC SHEET + MEASUREMENTS



Sport-Tek® Women's Long Sleeve Rashguard Tee.
LST470LS

HOW TO MEASURE



BUST

Measure under the arm and around the fullest part of the bust with arms down, keeping tape horizontal.

COLORS



Black
PMS BLACK
C



Dark Smoke
Grey
PMS 425C



True Royal
PMS 7687C



White